

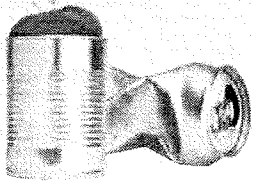
# Recycle Right

Do your part to help the State of Florida reach its goal of recycling **75%** of its waste by 2020. In 2015, the State of Florida's recycling rate was **54%**.

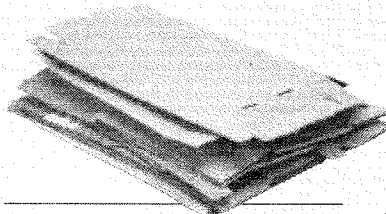


## YES

Place clean and empty items loose in recycling containers.



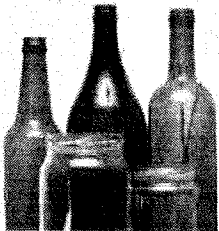
**Aluminum, Tin & Steel Cans**



**Cardboard** (Flattened)



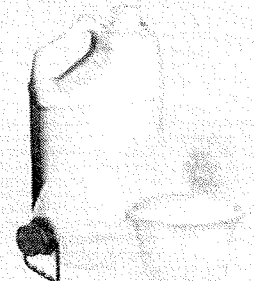
**Cartons** (NO straws)



**Glass Bottles & Jars**  
(NO other types of glass)

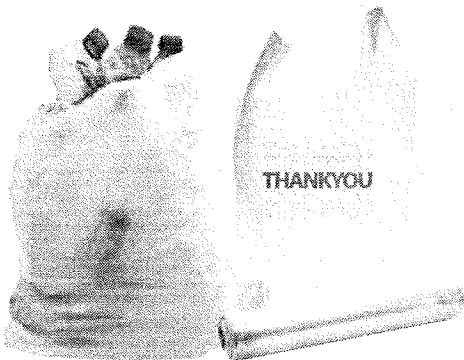


**Newspaper, Mixed Paper & Paperboard** (Cereal boxes)

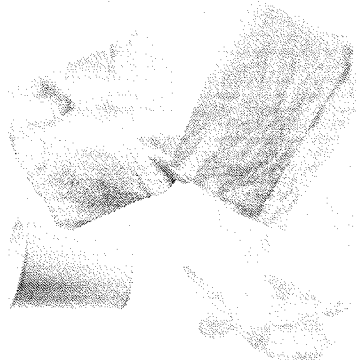


**Plastic Bottles**  
(Plastic containers #1-7)

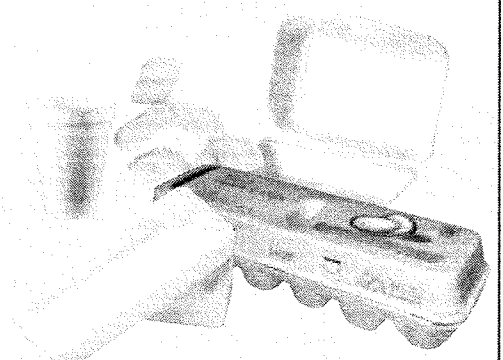
## NO



**No plastic bags, wrap, packaging or film**



**No paper towels, plates, cups, tissue or wax paper**



**No Styrofoam, foam containers or packaging**



Funding provided by Pinellas County Solid Waste. Pinellas County complies with the Americans with Disabilities Act. To obtain accessible formats of this document, please call (727) 464-4062 (V/TDD). Produced in cooperation with the Pinellas County Marketing & Communications Department.

[pinellascounty.org/recycle](http://pinellascounty.org/recycle)



Scan with a smartphone

# Pinellas County Solid Waste INFORMATION SHEET

## Waste-to-Energy Facility and Bridgeway Acres Landfill

### SCALEHOUSE HOURS

- Open Monday - Friday 6am - 6pm and Saturday 7am - 5pm
- Closed Sundays, Thanksgiving, Christmas and New Year's Day

**All loads must be covered and secured!**

**DISPOSAL FEE: \$37.50 per ton**  
(includes tires and yard waste)

### FLAT RATES\*

The flat rate is not available if any modifications have been made to the vehicle (including sidewalls).

- Pickup trucks & vans ..... **\$10/load**
- Passenger vehicles..... **\$2/load**
- Christmas trees only—up to 5..... **\$3/load**

\*All others weigh in and out, paying **\$37.50 per ton.**

### REQUIRED DEPOSIT

- 50% of total loaded vehicle weight
- Deposit on credit cards may be held 3-5 business days based on policy of issuing bank.

### SPECIAL FEES

- Load Search Fee ..... **\$100**
- Special Service Fee ..... **\$100**

### PAYMENT

- Cash or credit cards—Visa or MasterCard only.
- Checks—excluding starter checks, out-of-state personal checks or two-party checks.

### TIRES

- Tires up to 36": Accepted whole
- Tires over 36": Must be cut into quarters
- Up to 2 tires can be attached to a rim; all others must have rim removed.
- 5 or more tires: Weigh in and out paying .. **\$37.50/ton**

### FUEL CONTAINERS

- EMPTY fuel tanks and drums are accepted with one end opened.
- EMPTY cylinders are accepted with valve removed.

### PROHIBITED ITEMS

- NO hazardous waste\*\*
- NO gasoline or fuel oil\*\*
- NO radioactive waste
- NO liquid waste
- NO biological waste
- NO explosives
- NO infectious waste

\*\* Accepted at HEC<sub>3</sub> from residents (see reverse)



Pinellas County Solid Waste  
3095 114<sup>th</sup> Avenue North  
St. Petersburg, FL 33716  
**(727) 464-7500**

[www.pinellascounty.org/solidwaste](http://www.pinellascounty.org/solidwaste)

Pinellas County complies with the Americans with Disabilities Act. To obtain accessible formats, contact Communications at (727) 464-4062 (V/TDD). Produced in cooperation with Pinellas County Communications Dept. Funding provided by Solid Waste. 11/15

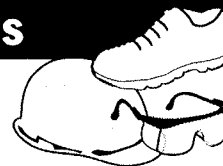
## Safety Precautions

### REQUIRED PERSONAL PROTECTIVE EQUIPMENT (PPE):

- Closed toed shoes required for all

If going to the tipping floor or landfill you must also wear

- High visibility safety vest
- Hard hat
- Safety glasses



## Recycling Drop-off Center

- cardboard
- magazines
- mixed paper
- newspapers
- phone books
- aluminum cans
- glass bottles
- milk & juice cartons
- plastics #1 - 7
- steel cans

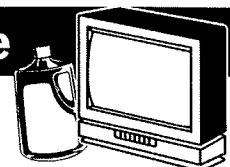


Hours: Open 24 hours/7 days

Location: 2855 109<sup>th</sup> Ave. N.

## Hazardous Waste

HEC<sub>3</sub> and Swap Shop location:  
2855 109<sup>th</sup> Ave. N. (off 28<sup>th</sup> St. N.)



Hours: Mon. - Fri. 6 am - 6 pm  
Sat. 7 am - 5 pm. Closed Sun. and holidays

HEC<sub>3</sub> (Household Electronics and Chemical Collection Center) accepts hazardous electronics and chemicals from residents at no charge up to the quantities listed below:

- 6 - TVs (must be whole)
- 12 - Fluorescent bulbs-tubes
- 20 - 1-gallon paint containers
- 5 - 5-gallon containers of fuel
- 5 - 5-gallon paint containers
- or other automotive fluids
- 5 - Computers

Residents can pick up or donate chemicals such as paint or cleaners for free at the *Swap Shop*. For business waste, visit: [www.pinellascounty.org/bizwaste](http://www.pinellascounty.org/bizwaste)

## Free Mulch

Bulk quantities available (free loading). Must have tarp. Open Monday - Friday 6 am - 6 pm and Saturday 7 am - 5 pm.  
Recycling Drop-Off Center, 2855 109<sup>th</sup> Ave. N.: Small quantities available. Open 24 hours/7 days.



## Special Waste

Special waste (such as asbestos, sludge, industrial/process waste or contaminated soil) requires an appointment. Additional tests may be necessary. Call (727) 464-7500.



## Handy Web Links

- [www.pinellascounty.org/recycle](http://www.pinellascounty.org/recycle)
- [www.pinellascounty.org/solidwaste/getridofit](http://www.pinellascounty.org/solidwaste/getridofit)
- [www.pinellascounty.org/solidwaste/swapshop](http://www.pinellascounty.org/solidwaste/swapshop)

